

January 26, 2014



PSNA Quarterly Meeting

Tuesday, February 3rd – 7pm

Crowe's Nest Farm

10300 Taylor Lane

Manor, Texas

Information about the PSNA area, plus refreshments and camaraderie

Guest Speaker: Claud Bramblett - **“Real History Is Sometimes More Amazing and Surprising Than Fiction”**

Mr. Bramblett is Professor Emeritus from the University of Texas Department of Anthropology and a PSNA member. His research showed that “Fort Webber” was a house and not a fort. It no longer exists, but it probably was located in or near the village of Webberville. The search for it gave him a chance to learn something about local history - the clash between freedom and slavery in a nation (Mexico) that had abolished slavery, the early Republic of Texas's struggle to raise money, and especially the character and bravery of the first historical residents of Travis County. Photos of the house will be shown. According to Mr. Bramblett, “I am sure that every neighborhood has such stories if we were motivated to look for them. Real history is sometimes more amazing and more surprising than fiction.”



City of Austin Adopts New Law Banning Hand-Held Cellphones

For those of you who travel to Austin for work or other business, please know that on January 1st, the City of Austin (as well as San Antonio) introduced a hands-free law that prohibits texting and driving in addition to holding a digital device while driving or riding a bicycle.

Holding a phone to dial, text or use a navigation system while in motion is a violation. Drivers will not be cited if they use headphones or wireless technology such as a Bluetooth or using a GPS system attached to the dashboard.

During the month of January, only warnings will be given to violators, but as of February 1st, fines up to \$500 may be issued.



Park Springs Neighborhood Association.....

The purpose of Park Springs Neighborhood Association is to “improve and maintain the quality of life for residents and protect from environmental hazards within the boundaries of the association”. More information is available on the PSNA website – www.parkspringsna.org.

PSNA Yearly Dues are \$20 for the fiscal year May, 2014 – April, 2015.



We will be sending information about the renewal of your dues for 2015 in an upcoming newsletter.

Membership dues are used to pay for postage, refreshments, meeting facilities, web site hosting and other expenses. Plus, if you have paid your dues, you receive the monthly PSNA newsletter!

Manor ISD News

1. School Board Election Day is Saturday, May 9, 2015. Two Trustees will be elected for terms of 3 years each. Candidates run at large. The winners will be the two candidates receiving the most votes. The positions are currently held by Anna Cortez and Marlin Thomas. Applications to become a candidate are available from the Manor ISD Administration building located at 10335 US 290 East, Manor, TX 78653. Call (512) 278-4000 for more information.
2. At a special called school board meeting on January 20, 2015, the Board voted to extend the contract of Superintendent Kevin Brackmeyer by two and a half years - to June of 2016. His current contract would have expired December 31, 2015.



The 2015 State Legislature is now in Session

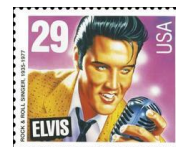
The Texas State legislature opened its session last week with new Governor Greg Abbot and new Lieutenant Governor Dan Patrick. The session will end on May 31, 2015.

Representing Manor in District 46 of the Texas House is Dawanna Dukes who has been in office since 1997. She can be reached at (512) 463-0506 or by email at dawanna.dukes@house.state.tx.us.

Representing Manor in District 14 of the Texas State is Kirk Watson who has been in office since 2007. He can be reached at (512) 463-0114 or by email at kirk.watson@senate.state.tx.us.

Did you know?.....

The average stamp when licked has a 1/10th of a calorie. The first stamp design selected by vote of the U.S. public was the 1993 Elvis Presley 29 cent stamp. Zip code 12345 is assigned to General Electric in Schenectady, New York. The world's most-used public mailbox is located at the intersection of Madison and Halsted Streets in Chicago. It has to be emptied six times per day. The cost to mail a letter using the Pony Express was initially \$5 per half ounce in 1860 and was later reduced to \$1 per half ounce at the time of its demise in 1861.



PSNA Boundaries are US 290 on the north, FM 973 on the west, FM 969 on the south, and the Travis-Bastrop county line on the east. Everyone residing in this area is welcome to join. There is more information on our website - www.parkspringsna.org. Our mailing address is P.O. Box 1008 Manor, TX 78653.

PSNA Meetings for 2015:*1st Tuesdays at 7pm @ Crowe's Nest Farm*

Tuesday, February 2, 2015

Tuesday, May 5, 2015

Tuesday, August 4, 2015

Tuesday, November 3, 2015

**Important Dates to Remember:**

Saturday, Feb 14 – Valentine's Day

Monday, Feb 16 – President's Day

Tuesday, Feb 17 – Fat Tuesday

Wednesday, Feb 18 – Ash Wednesday

Sunday, March 8 – Daylight Saving Time Begins – "spring forward" 1 hour

Friday, April 3 - Good Friday

Sunday, April 5 - Easter

City of Manor News**January 7, 2015 Meeting –**

1. Council members approved a closing date of January 15, 2015 at 5:00 p.m. for accepting applications for the position of City Manager. The position had been posted on the Texas Municipal League website since November 21, 2014. Approximately 35 applications had been received by the meeting. Since the dismissal of City Manager Steve Shanks last summer, Assistant City Manager Tom Bolt has been serving as the Interim City Manager. Council members decided that they will not create a committee to review/reduce number of the applications, but will review all applications until February 15, 2015

January 21, 2015 Meeting –

1. The Manor Police Department report noted that there were 797 calls made during the month of December, 2014 vs. 715 calls made in December, 2013. Officers responded to 25.7 calls per day during December, 2014.
2. In December, 2014, the City of Manor received \$54,657 in sales tax revenue for purchases made at Manor businesses. This is a \$24,000 increase from sales tax revenue received in December, 2013.
3. Council members awarded a contract to Hayes Modular Group to outfit a used building that will house the offices of the Manor Police Department. The location will be at the "City Yard" located across the street from the Manor Fire Department. Currently, employees of the Public Works Department are housed in a building at the site which must be moved to make way for the modular building. The Council also voted to advertise bids for the site work preparation will include the preparation of the site, the removal of underground tanks, the removal of two slabs, and the installation of a parking lot, driveway and curbs.

City Of Manor General Election to be Held On May 9

The City of Manor has filed a notice for the general election to be held on Saturday, May 9, 2015. There are four city council positions up for election which includes the position of Mayor currently held by Rita Jonse in addition to Place 1, Place 3 and Place 5. Place 1 is currently held by Sherry Hooker, Place 3 is currently held by Rebecca Davies and Place 5 is held by David Cruz.

To be eligible to run for a position on the Council, a candidate must be at least 21 years of age, a US citizen, a resident of Travis County and the City of Manor for the past 12 months. Candidates should also hold no debt charges to the City.

Applications are available from Frances Aguilar, City Secretary at the Manor City Hall located at 105 East Eggleston Street. For information, call (512) 272-5555.

Travis County Commissioners Court Installs Two New Members

With the retirement in 2014 of former County Judge Sam Biscoe, two new members of the Commissioners Court were recently sworn in. Replacing Biscoe is Judge Sarah Eckhardt and the new Commissioner is Bridget Shea who joins Commissioners Ron Davis (representing Manor and Precinct 1), Commissioner Gerald Daugherty and Commissioner Margaret Gomez.

The Commissioners meet every Tuesday at 9am at the Travis County Administrative Building located at 700 Lavaca Street in Austin.

Under Construction – A look at some of the road projects in/around Manor taking place during 2015

Source: Texas Department of Transportation and *Austin American Statesman* – Jan 5, 2015

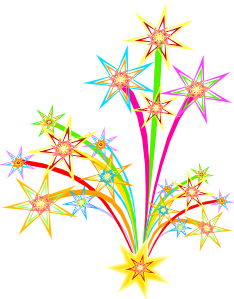
Traffic Light at Blake-Manor Rd. and FM 973: Expected completion within the next few months.

New Braker Lane east of FM 973 into Whisper Valley Development: The first phase of \$18 million projects has begun, with a section eastward from FM 973 into what will become the Whisper Valley development. A second phase, extending all the way to Taylor Lane, is expected to begin construction in 2016.

Reconstruction of FM 973 from Wildhorse Creek subdivision to Decker Creek: Construction expected to begin in the spring and continue several months. The road will remain two lanes, except for a third turning lane near Wildhorse. South of Wildhorse, the shoulders will be added on both sides. Bridges will not be widened.

FM 973 from FM 969 to TX 71: South of FM 969, the road will be expanded to four lanes and straightened, with a new bridge across the Colorado River.

Parmer Lane from US 290 to 130 Toll Road: Construction is about 90% complete on this 1.1 mile, \$11 million project.



The PSNA Nominations Committee Needs You!

PSNA Officers for 2015 will be elected at the Tuesday, May 5 PSNA meeting. If you would like to serve on the Nominations Committee to determine interested candidates to run for office, or if you would like to hold an office for 2015, please call PSNA President John Williams at (512) 538-4576.